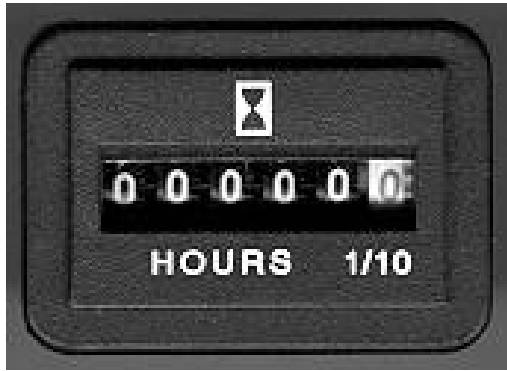


Technical Data

Model TMI61D96 Engine Powered Hour Meter



TMI SERIES **TMI61D96** ENGINE POWERED HOUR METER WAS DESIGNED TO BE TOTALLY POWERED BY THE ELECTRICAL ENERGY FROM A 2 OR 4 STROKE GASOLINE ENGINES OR AC/DC POWER EQUIPMENT.

Electrical power is obtained by connecting the hour meter across the engine's kill switch. When installed, the T61 hour meter will indicate true engine operating time. It is now possible to accurately measure the operating time of equipment driven by a gasoline engine.

Some applications include: Lawnmowers, brush-cutters, pumps, chainsaws, power sprayers, tillers, cultivators, farm and snow removal equipment DC power equipment.

A quartz-crystal time base insures accurate long-term timekeeping.

A reliable electromechanical wheel-type indicator is used to store accumulated hours.

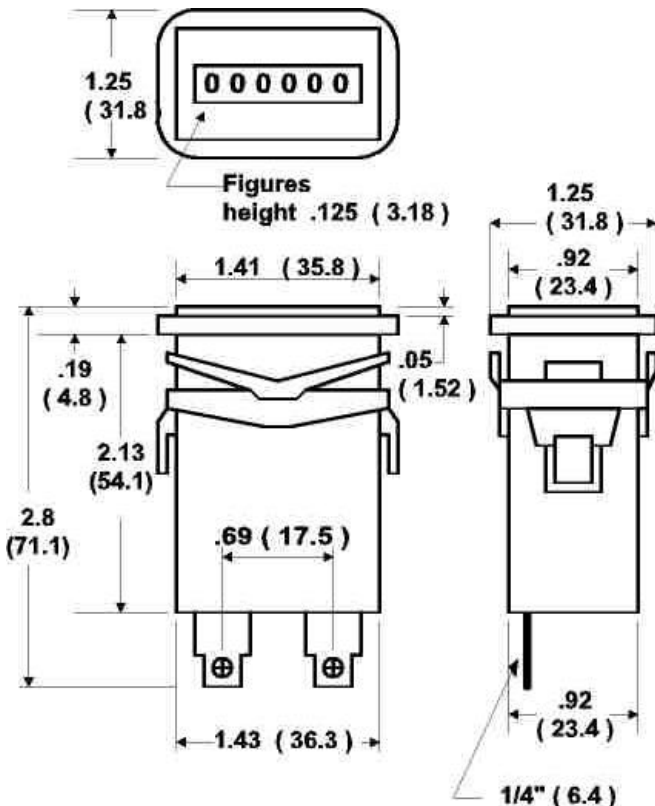
This compact tamperproof meter is sealed against the environment to provide years of service.

SPECIFICATIONS:

Time Scale:	6-digits 99,999.9 Hours Automatic recycle to zero
Figures:	Hours - White on Black Tenths - Red on white Height - 0.125"
Accuracy:	Better than $\pm 0.02\%$ over entire range
Temperature:	Standard —30°C to +65°C (-22°F to +149°F)
Vibration Resistance:	With stands 10 to 75 Hz at 1 to 8 9's
Protected from:	Reverse polarity
Configuration:	Front panel mounts with new push-on retaining clip Panel mount with 2 holes (front or back)

FEATURES:

1. No Battery Required for Operation
2. Direct Connection to Gasoline Engine or DC power
3. Low Power Consumption
4. Solid State Electronic Circuit
5. Quartz-Crystal for Accurate Timing
6. Will Not Lose Count
7. Operation 6-50 volts DC/AC
8. High Impact Tamperproof Plastic case
9. Indicates operating Time in hours and tenth
10. Totally Sealed



TRACK MASTER INC., MFG.
12220 WOODCREST STREET, BOX 725,
TAYLOR, MICHIGAN 48180-0725
Tel: (734) 287-2822 Fax: (734) 287-2866 E-Mail:
TMIMFG@AOL.COM